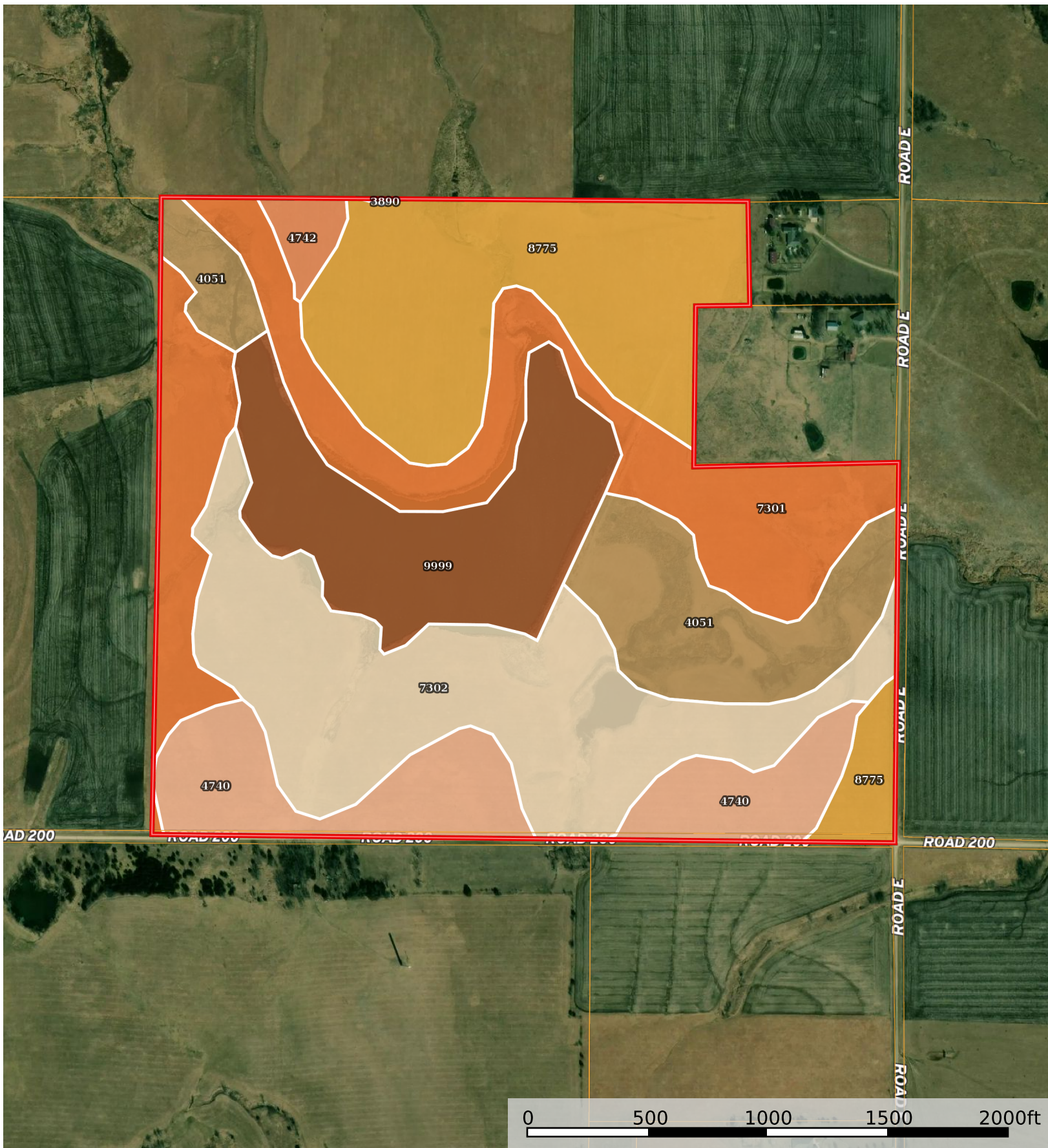



DeBauge Tract 1

Lyon County, Kansas, 170 AC +/-



 Boundary

|  Boundary 169.27 ac

SOIL CODE	SOIL DESCRIPTION	ACRES	%	CPI	NCCPI	CAP
7302	Martin silty clay loam, 3 to 7 percent slopes	37.45	22.12	0	53	3e
8775	Kenoma silt loam, 1 to 3 percent slopes	34.91	20.62	0	59	3e
7301	Martin silty clay loam, 1 to 3 percent slopes	33.72	19.92	0	53	2e
9999	Water	22.95	13.56	0	-	-
4051	Ivan silt loam, channeled	19.09	11.28	0	51	5w
4740	Labette silty clay loam, 1 to 3 percent slopes	19.01	11.23	0	49	2e
4742	Labette silty clay loam, 3 to 7 percent slopes	2.09	1.23	0	48	3e
3890	Ladysmith silty clay loam, 0 to 1 percent slopes	0.05	0.03	0	53	2s
TOTALS		169.27(*)	100%	-	46.32	2.9

(*) Total acres may differ in the second decimal compared to the sum of each acreage soil. This is due to a round error because we only show the acres of each soil with two decimal.

